

ride smart



highlight your presence by:
 adding **bike lights**
 white in front & **red** in back
 wear **reflective clothing**,
 & use a **bell**

see
 be seen
 be heard



wear a protective helmet &
 make eye contact with motorists

obey traffic signals &
 avoid distractions while biking

- secure your ride**
1. use durable locks
 2. lock up in a busy location
 3. attach to a secure post
 4. lock through frame & wheel

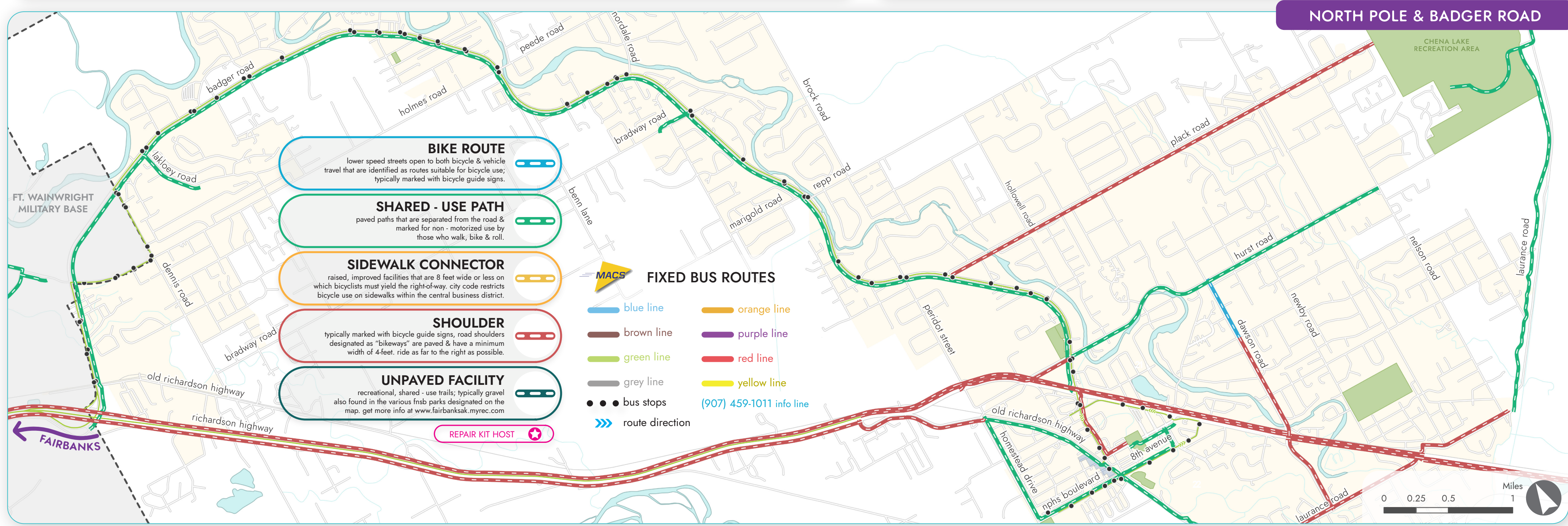
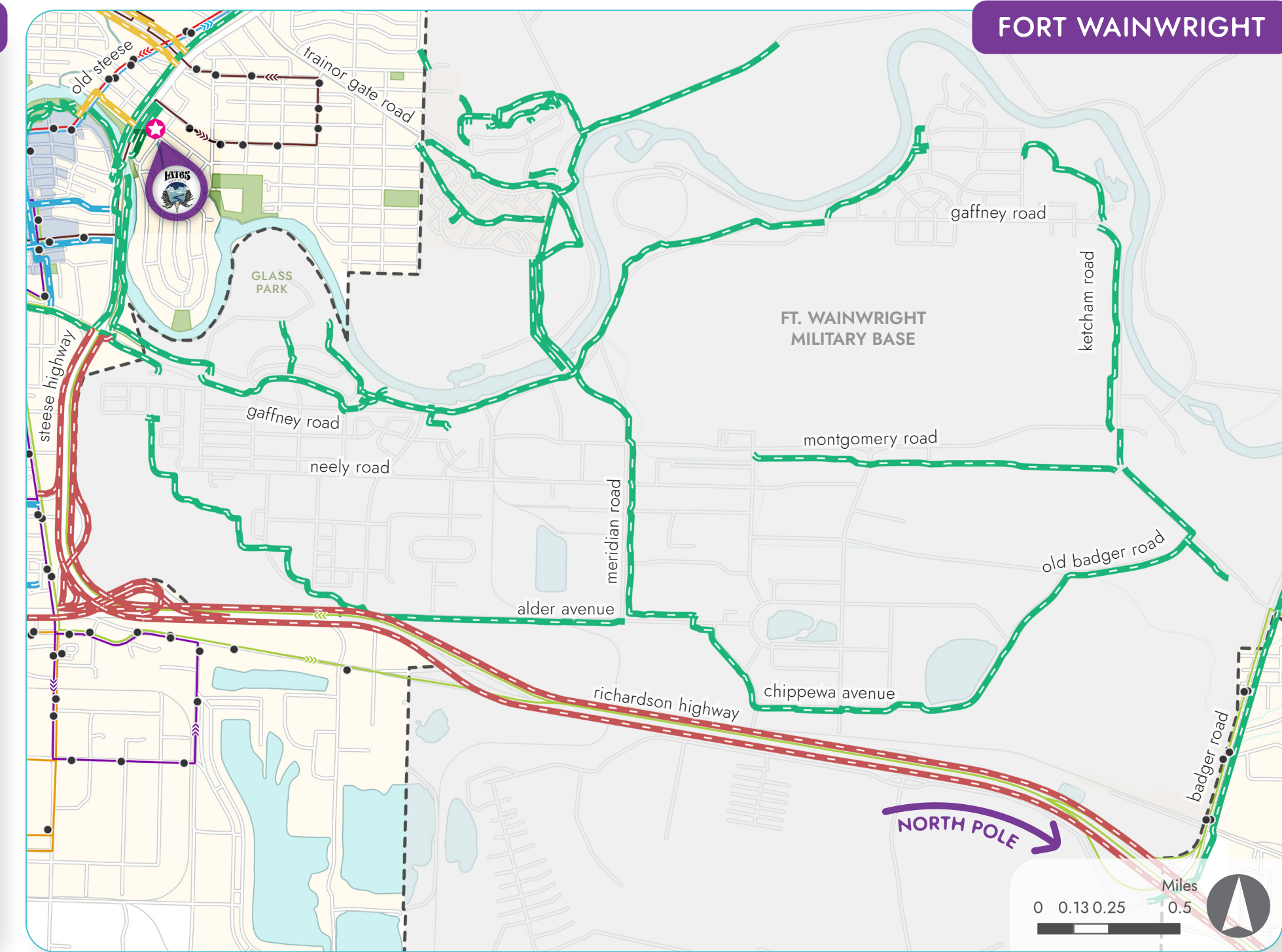
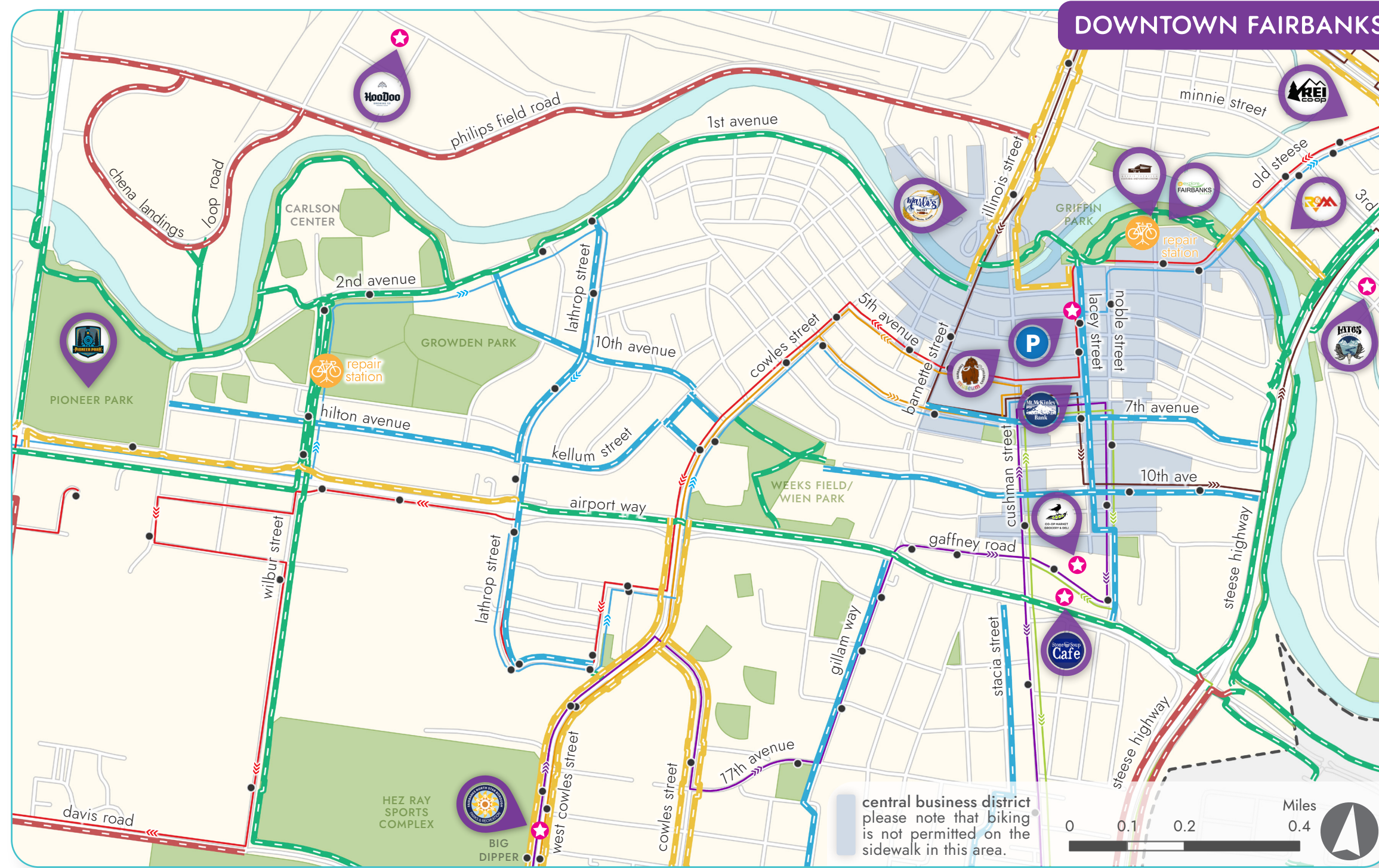
join the fbx biking community

Volunteer for FAST Planning's
 Annual Bike & Ped Counts
 (third week of May every year!).

Join the conversation by attending a Bicycle &
 Pedestrian Advisory Committee Meeting.
 Follow @fbxroads on Instagram or
 FAST Planning on Facebook for meeting info.

FAST Planning hosts free bike valets throughout
 the summer. call/text (907) 251-7248 for info.

Contribute to the *Bicycle Parking Project* &
 help crowdsource all of the bike rack locations in
 the Fairbanks/North Pole areas!



cycling in fairbanks

- do**
- ride with the flow of traffic
 - ride as far to the right of a lane or shoulder
 - follow all traffic laws in place for motorists
 - yield to pedestrians on sidewalks & trails
 - use arm/hand signals for turns, location changes, & hazards
 - use lights & reflective gear at dawn/dusk that are visible from 500 feet
- dont**
- ride more than 2 abreast
 - ride on sidewalks in the business district or where posted
 - obstruct pedestrian or vehicular traffic with your parked bicycle
 - lock bicycles to fire hydrants, police/fire call boxes, traffic signal poles, poles in bus loading zones, stand poles, or signs within 25 feet of an intersection, or trees under 10 inches in diameter
- optional web registration:
<http://p2c.fairbanksalaska.us>

how to bike & ride with MACS transit

- each metropolitan area commuter system (MACS) bus can transport two bicycles with up to 5-inch tires at any time on the front mounted racks racks are available on a first come, first served basis
- 1 before getting on the bus, alert the bus driver
let them know you're using the bike rack
 - 2 lower the bike rack
pull up on the center handle of the rack
 - 3 lift & place bike into the bike rack's wheel slots
place the rack support arm on the front tire of your bike to secure it
 - 4 hop onboard the bus & pay your fare (there are no bike fees)
 - 5 when arriving at your stop: alert the bus driver
let them know you're getting your bike
- have a safe ride!