



### ride smart

highlight your presence by:  
 adding **bike lights**  
**white** in front & **red** in back  
 wear **reflective clothing**,  
 & use a **bell**

make eye contact with motorists  
 & wear a protective helmet

obey traffic signals &  
 avoid distractions while biking

**secure your ride**

1. use durable locks
2. lock up in a busy location
3. attach to a secure post
4. lock through frame & wheel

**Free Helmets!**  
 In collaboration with Volunteers in Policing and Kinross, we are able to distribute free helmets to anyone who needs them, anytime. If you or someone you know needs a new helmet, see the Contact tab for more information!  
 \*viking helmets not included

### join the fbx biking community

**Want to help out?**  
 Volunteer with FAST Planning for all sorts of fun active transportation related events!

Join the conversation by attending a Bicycle & Pedestrian Advisory Committee Meeting. Follow @fbxroads on Instagram or FAST Planning on Facebook for meeting info.

FAST Planning hosts free bike valets throughout the summer. call/text (907) 251-7248 for info.

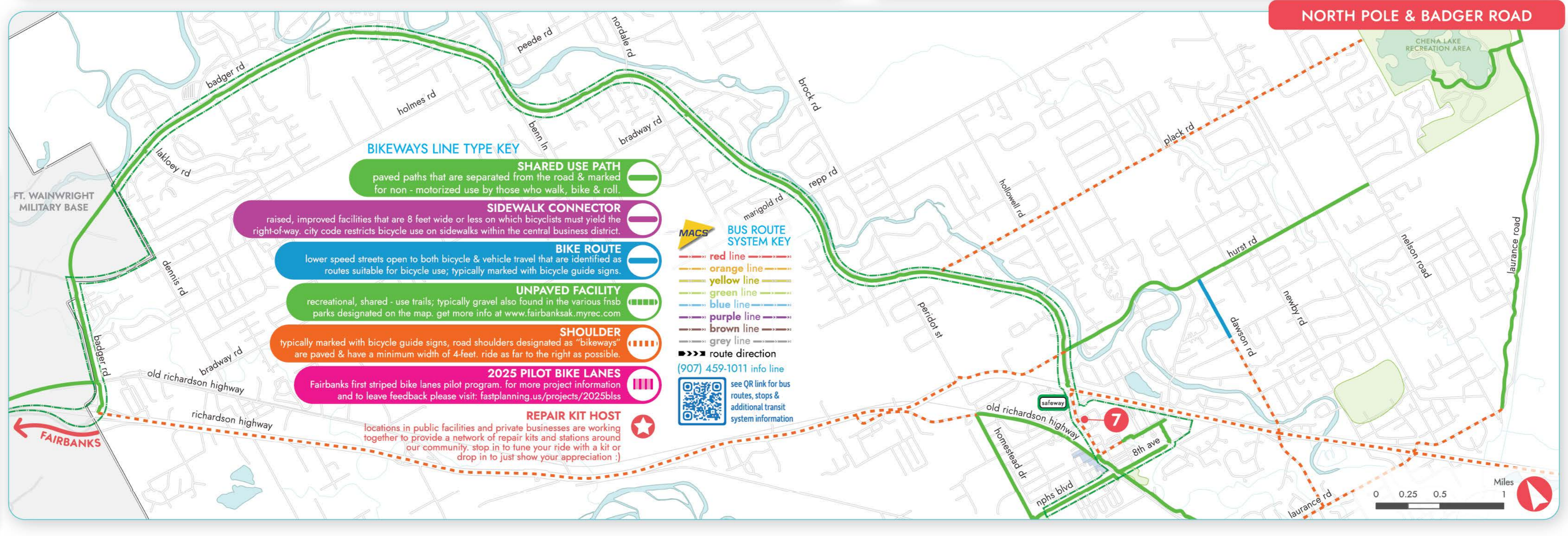
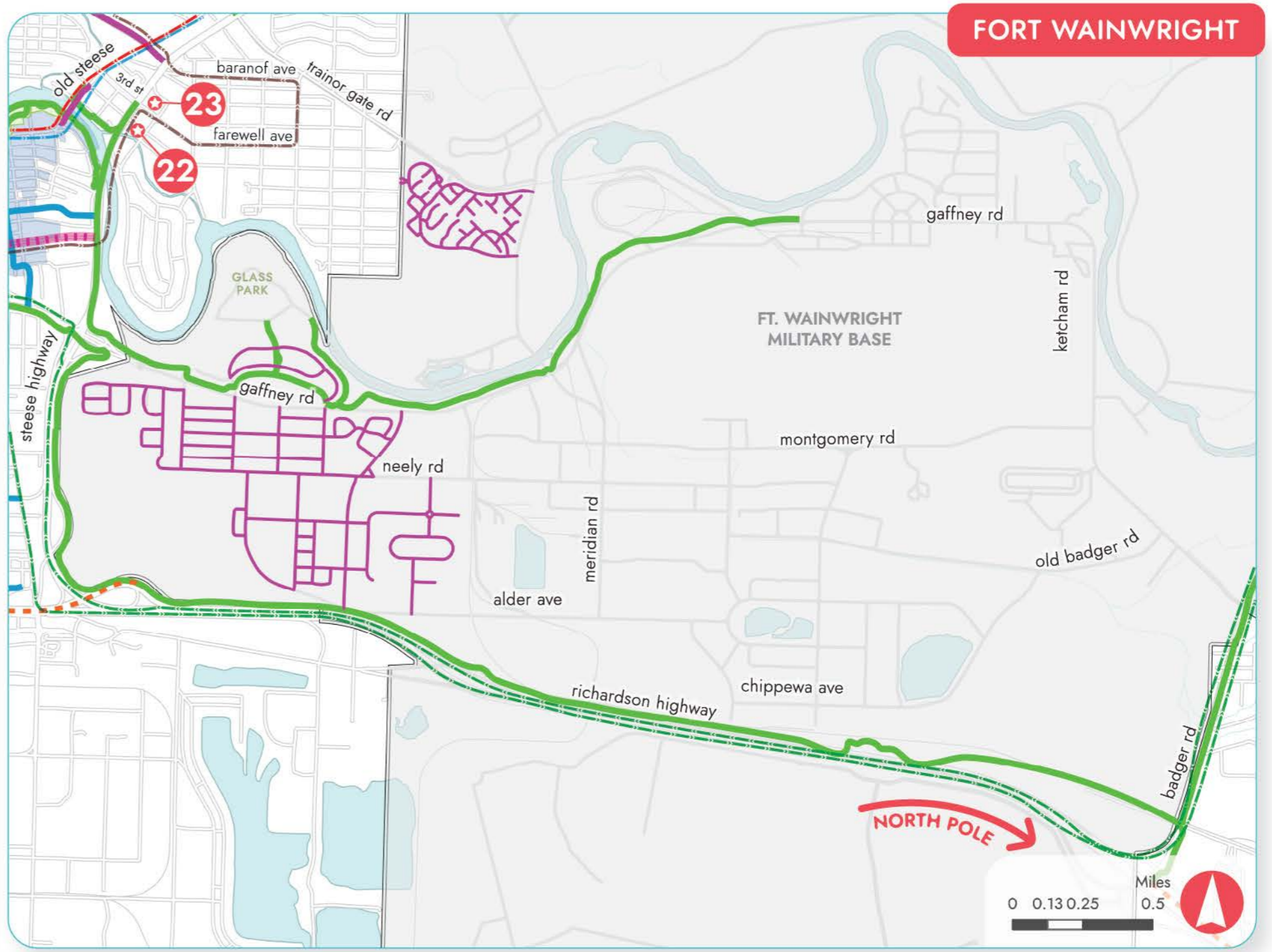
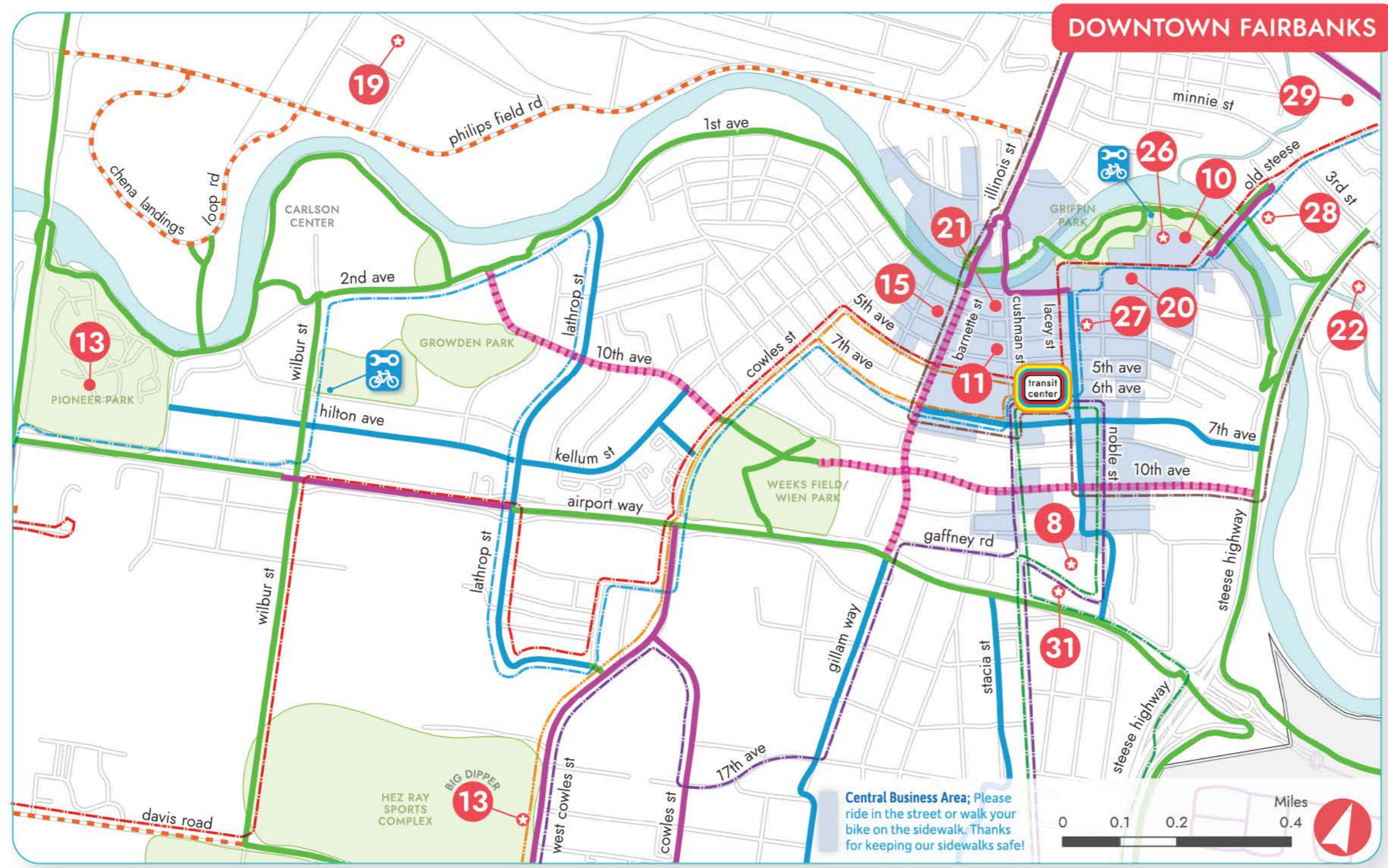
**Get out in the community!**  
 Join any one of the many Fairbanks/North Pole area regular rides! One to check out happens just about every Friday after close, you can join a group ride (fast, chill - it's up to you!) with our friends at Bankstown Bike & Ski. They usually pop by a brewery (or more) and always have experts around to help troubleshoot if you have any questions about your ride or issues. Build your confidence as a rider during these fun group rides! They roll out rain, shine, snow and ice.

## BIKEWAYS

★★ 2025 ★★

### bike friendly fbx partners

fastplanning.us  
 FASTplanning  
 @fbxroads



# BIKEWAYS

★★ 2025 ★★

FAIRBANKS, NORTH POLE & VICINITY

moving & improving fairbanks.

### cycling in fairbanks

**do**

- ride with the flow of traffic
- ride as far to the right of a lane or shoulder
- follow all traffic laws in place for motorists
- yield to pedestrians on sidewalks & trails
- use arm/hand signals for turns, location changes, & hazards
- use lights & reflective gear at dawn/dusk that are visible from 500 feet

**don't**

- ride more than 2 abreast
- ride on sidewalks in the business district or where posted
- obstruct pedestrian or vehicular traffic with your parked bicycle
- lock bicycles to fire hydrants, police/fire call boxes, traffic signal poles, poles in bus loading zones, stand poles, or signs within 25 feet of an intersection, or trees under 10 inches in diameter

### how to bike & ride with MACS transit

- before getting on the bus, alert the bus driver  
let them know you're using the bike rack
- lower the bike rack  
pull up on the center handle of the rack
- lift & place bike into the bike rack's wheel slots  
place the rack support arm on the front tire of your bike to secure it
- hop onboard the bus & pay your fare (there are no bike fees)
- when arriving at your stop, alert the bus driver  
let them know you're getting your bike

have a safe ride!